

2008 BOND

CONSTRUCTION PROGRESS REPORTS

October 15, 2009

ORR ELEMENTARY SCHOOL

DENSON

Rough-in for above ceiling utilities is underway in Areas A & B 1st and 2nd floors.

Structural Steel erection continues in Areas B and C

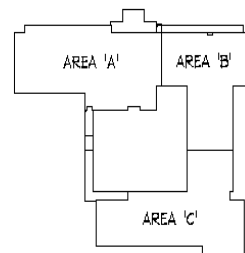
Framing for interior partitions on 1st and 2nd floors of Areas A & B

Roof decking at high roof Area D is being installed

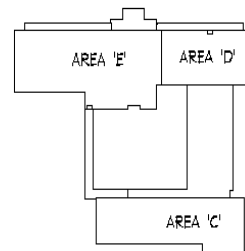
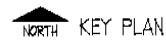
Brick work at South and West sides of Area A are near completion.

The next month's progress will be the completion of steel erection and roof deck. Continue framing and drywall at exterior and interior walls. Continuation of exterior brick work and start installation of metal roofing. Start of built up roofing.

A. W. ORR



FIRST FLOOR



SECOND FLOOR



2008 BOND

CONSTRUCTION PROGRESS REPORTS

October 15, 2009

CLARKSTON ELEMENTARY SCHOOL

RPR

Standing Seam Metal Roof is being installed at Area B

Masonry work is continuing in all areas and windows are being installed

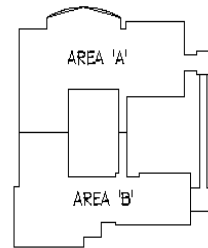
Sheetrock finish is being installed Area C

Additional brick crews have been added to recover time lost due to rain.

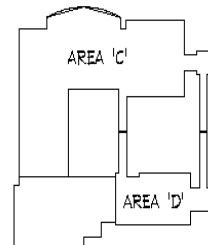
Brickwork has started at bridge to Gym Area D.

Progress for the next month will be the start of interior finishes in Area C and finishing of sheetrock in Area A. Bay window at library will be installed. Completion of standing seam metal roof at Area B & D. Permanent electric power will be installed.

CLARKSTON



 NORTH KEY PLAN



 NORTH SECOND FLOOR KEY PLAN

2008 BOND

CONSTRUCTION PROGRESS REPORTS

October 15, 2009

WOODS ELEMENTARY SCHOOL

DENSON

Structural steel erection is continuing and 2nd floor decking is being installed

2nd floor slabs are complete

Roof deck at the high roof in Area D is being installed.

Masonry work in Area C is complete.

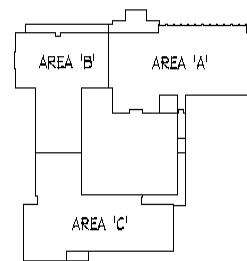
Brickwork has started at single story classrooms Area C

Above ceiling rough-ins are underway in single story and Areas A & B

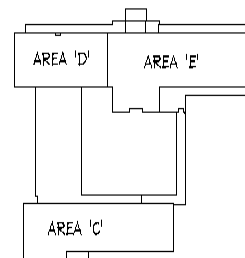
Built-up roofing has started at Area C

The next month's progress will be the completion of steel erection, installation of standing seam metal roof. Continue framing interior walls, installation of fire sprinklers, ductwork, cable trays and electrical rough-in

ANDY WOODS



← NORTH
FIRST FLOOR
KEY PLAN



← NORTH
SECOND FLOOR
KEY PLAN

2008 BOND

CONSTRUCTION PROGRESS REPORTS

October 15, 2009

JONES/BOSHEARS SCHOOL

DENSON

Main Steel erection is complete only detail work remains in all areas except A & B

Installation of drywall is started in Areas E & F

Steel Erection is nearing completion in Areas A & B this is the last area to be erected

Brickwork is complete at Adaptive PE in Area B

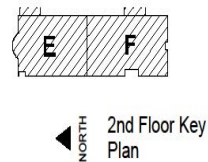
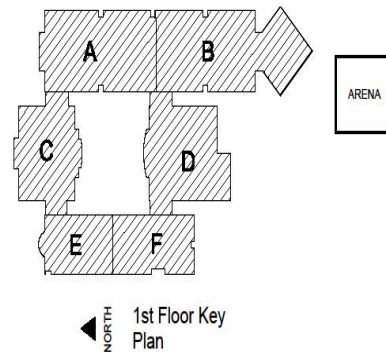
Roof deck is complete at Area D

Roofing is being installed on flat area of Area C

Exterior walls at Arena are complete and roof panels are being installed

The next month's progress will be the completion of the Arena and steel erection in Areas A & B. Continue installation of sheetrock in Areas E & F. Framing of walls in Areas A & B

Jones - Boshears Elementary School



2008 BOND

CONSTRUCTION PROGRESS REPORTS

October 15, 2009

GRIFFIN ELEMENTARY

DENSON

GMP was approved by Board on Oct 5, 2009

Contractor mobilized on project on Oct. 6

The next months work will be focused on mass excavation and fill and site utilities.

